

La Terre

collection



Shown below from front to back: La Terre Ikat Border in Limestone, La Terre Braid in Twine, La Terre Brush Fringe and La Terre Macramé Gimp in Flax



The La Terre **Branch Border** draws from the Japanese aesthetic of Wabi Sabi which finds integrity in natural objects and visual progression of time on their surfaces. A row of 2" coconut wood branches bound and hand-tied with twine yield the La Terra Branch Border, equally appropriate for upholstery and drapery applications.



La Terre Branch Border



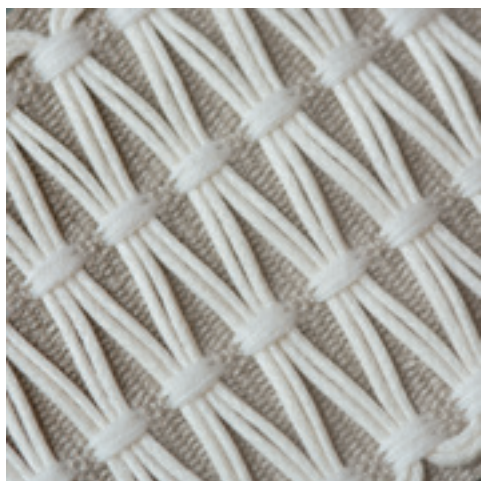
La Terre Branch Border

La Terre is a collection of organically inspired passementerie woven of the finest denier linens and luxurious cottons.

The ethos of this collection lies in its purity and understated elegance. Linen embodies a textural richness that's unparalleled and timeless; therefore, the collection incorporates sophisticated cords, gimps, borders and fringes.

Waxed cotton cord and bleached jute are among the other intriguing elements that render the patterning on the La Terre Braids and Borders.

The La Terre **ikat Border** uses weaving techniques to emphasize color and this effect creates the patterns.



Shown clockwise: Tieback in Sea Mist, Onion Tassel Fringe in Pebble, Appliqué Border in Pebble, Ikat Border in Limestone, Braid in Canvas, Key Tassel in Canvas, Printed Border in Pebble, Printed Border in Flax and Strié Border in Flax



The **La Terre Printed Border** is an organic stripe screen printed by hand on linen mirroring the patterns of birch bark.

There are an astounding 75 tassels per meter in the **La Terre Onion Tassel Fringe**, a luxurious strié linen fringe with a coordinated strié border.

The **La Terre Cut Fringe, Single Tassel Tieback** and **Key Tassel** are loomed in novel yarns of varied deniers and overall fluidity.

Twisted fine **Linen Cords** are offered in 3mm, 5mm and 8mm diameters and complemented by a soft 1" linen **Brush Fringe** and waxed cotton cord **Macramé Gimp**.



Linen and jute are used to create the elegant heirloom quality in the graceful geometric **Appliqué Border** influenced by iron gate ornamentation.

A lush, 1" fine linen **Brush Fringe** blooms in application and is available in 6 colors.

The La Terre **Strié Border** can be used on its own or in a layered application with coordinates.

The subtle hues of La Terre reside within Canvas, Dune, Flax and Sea Mist, all earthen in origin.

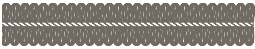
*Left: Appliqué Border in Pebble
Shown below: Brush Fringe in Canvas,
Strié Border and Cut Fringe in Pebble*



La Terre Tassel Tieback in Snow, Canvas,
Dune, Sea Mist, Flax, Pebble



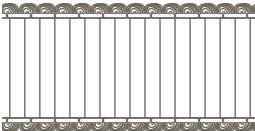
La Terre Collection



GB-57433 1/2" (12mm)
La Terre Gimp*



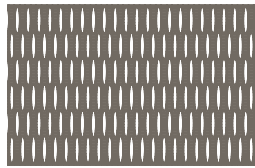
GB-57430 1/2" (12mm)
La Terre Macramé Gimp*



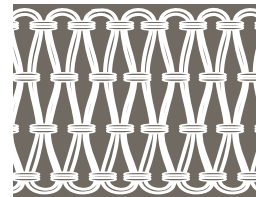
BT-57428 1.5" (38mm)
La Terre Strié Border*



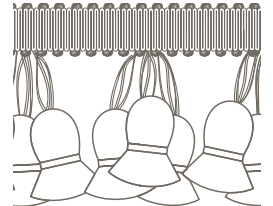
CT-57437 1/8" (3mm)
La Terre Cord with Tape*
CT-57439 3/16" (5mm)
La Terre Cord with Tape*
CT-57440 5/16" (8mm)
La Terre Cord with Tape*



BT-57429 1.5" (38mm)
La Terre Linen Border
Available in: Canvas,
Travertine, Flax, Burlap



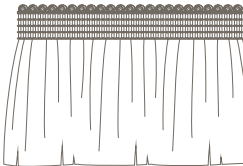
BT-57436 2.25" (57mm)
La Terre Braid
Available in: Canvas, Twine



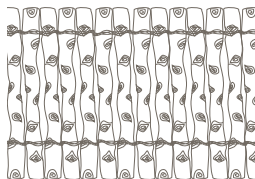
TF-57419 1.38" (36mm)
La Terre Onion Tassel Fringe
Available in: Canvas, Blush,
Sea Mist, Flax, Pebble



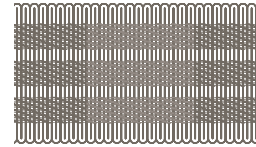
BF-57482 1" (26mm)
La Terre Brush Fringe*



FR-57441 4.75" (12cm)
La Terre Cut Fringe*



BT-57443 2" (51mm)
La Terre Branch Border
Available in: Bark



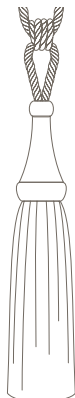
BT-57434 1" (26mm)
La Terre Ikat Border
Available in: Limestone



BT-57415 3" (76mm)
La Terre Printed Border
Available in: Dune, Flax,
Pebble, Birch, Ink



BT-57416 3" (76mm)
La Terre Appliqué Border
Available in: Snow, Canvas,
Limestone, Sea Mist, Flax, Pebble



KT-57446 5" (13cm)
La Terre Key Tassel*

*Available in: Snow, Canvas,
Dune, Sea Mist, Flax, Pebble

TT-57442 Height: 36" (92cm) / Spread: 37" (94cm)
La Terre Single Tassel Tie Back*